

# STRATHMORE NEWS

WINTER  
2023  
2024

## BLOOM ON THE MAP

Free educational  
and community  
programming  
around the county

## ORCHESTRATING CHANGE

New conductor leads  
classical concert refresh  
for second graders

## LIVE, LAUGH, LOVE

Q&A with Mandy Patinkin  
and family

# STRATHMORE



## BOARD OF DIRECTORS

Mary K. Sturtevant  
*Chair*  
Christoph A. Syllaba  
*Vice Chair*  
Jean Accius  
*Secretary*  
Theodore R. Goldstock  
*Treasurer*

J. Tyler Anthony  
Cathy Bernard  
Jerome W. Breslow  
Cynthia L. Cifuentes  
Lewis H. Ferguson  
Jay Grauberger  
Linda A. Herman  
Steven P. Hollman  
Fariba Kassiri  
William E. Kirwan  
Karen R. Lefkowitz  
Catherine S. Leggett  
Marcel J. Lettre  
Michelle W. Musgrove  
Bayo Oyewole  
Edward J. Rich  
John Sackett  
Deborah M. Smith  
Kate Stewart  
Benjamin Wu

## IN THIS ISSUE

|  |    |
|--|----|
| Holiday Happenings                             | 3  |
| Seán Heely: From AIR to Music Center Headliner | 6  |
| AIR Concerts & Workshops                       | 7  |
| Bloom-ing Across the County                    | 9  |
| Exhibitions                                    | 12 |
| Strathmore Snapshots                           | 13 |
| A New Sound for Student Concerts               | 14 |
| Q&A: Mandy Patinkin, Kathryn Grody & Son       | 16 |
| Winter Calendar                                | 17 |
| Thank You, Donors and Supporters               | 21 |
| General Information                            | 23 |

COVER ARTWORK: Bloom by David Stuck  
INSIDE COVER PHOTOS L-R: Seán Heely by Jim Saah, 2<sup>nd</sup> Grade Concert by Liz Lynch, *Garden Squares* by Patsie McCandless



## SONGWRITING AWARDS

*Fri, April 12*

Strathmore is proud to present the Bernard/Ebb Songwriting Awards, honoring the best songwriters in Maryland, Virginia, and Washington, DC. Now in its eighth year, the competition will be presented by Strathmore for the first time, and the final performance will take place at the Music Center on April 12. Tickets to the awards show will be available later this winter.

Applications are under review now. Finalists and guest judges will be announced in February.

[STRATHMORE.ORG/SONGWRITING](http://STRATHMORE.ORG/SONGWRITING)



## EXECUTIVE STAFF

Monica Jeffries Hazangeles  
*President and CEO*  
Bess Amerman  
*Chief Financial Officer*  
Joi Brown  
*Artistic Director /*  
*Vice President of Programming*  
Lauren Campbell  
*Vice President of Education*  
*and Community Engagement*  
Drew Martorella  
*Vice President of Operations*  
Heidi Onkst  
*Vice President of Advancement*  
Alaina Sadick Goss  
*Vice President of*  
*Communications and Marketing*  
Lesley Morris  
*Director of Mansion Galleries*  
Carlyle Smith  
*Director of Information*  
*Technology*  
Eliot Pfanstiehl  
*Founder and CEO Emeritus*



# HOLIDAY HAPPENINGS

*Celebrate the season at Strathmore with a festive lineup full of cheer*

## IN THE MUSIC CENTER

### MANNHEIM STEAMROLLER CHRISTMAS BY CHIP DAVIS

*Fri, Dec 1*

Kick off the holiday season with Mannheim Steamroller's beloved Christmas music and dazzling multimedia effects.



### DAVE KOZ AND FRIENDS CHRISTMAS TOUR 2023

Featuring: Jonathan Butler  
With Special Guests: Rebecca Jade and Marcus Anderson  
Introducing: Justin Lee Schultz



*Sun, Dec 3*

Jazz saxophonist Koz brings his 26<sup>th</sup> annual Christmas tour to Strathmore, a must-see staple of the holiday season.

### SEÁN HEELY'S CELTIC CHRISTMAS

*Fri, Dec 8*

Award-winning fiddler Heely leads a journey through the winter traditions of Scotland and Ireland, featuring bagpipe and traditional dancers.



### THE HIP HOP NUTCRACKER WITH GUEST MC KURTIS BLOW

*Tue–Fri, Dec 19–22*

Tchaikovsky's classic score is reimaged with explosive hip-hop choreography, all-star dancers, an on-stage DJ, and an electric violinist.

*Strathmore extends its gratitude to AARP for supporting our programs and for making this performance possible.*



### THE BIRCHMERE PRESENTS A JOYFUL HOLIDAY SAMARA JOY FEATURING THE McLENDON FAMILY

*Sat, Dec 23*

Winner of the 2023 Grammy Awards for best jazz vocal album and best new artist, Joy presents a combination of holiday songs and those from her repertoire that will appeal to fans of Sarah Vaughan and Sade alike.



### BLOOM AT GOOD HOPE CONCERT SERIES

#### A HOLIDAY EVENING WITH DOMINIQUE BIANCO

*Sat, Dec 16*

Artist in Residence alum Bianco adds her distinctive jazz voice to timeless holiday tunes.



## STUDENT CONCERTS

### MARYLAND CLASSIC YOUTH ORCHESTRAS OF STRATHMORE SYMPHONIC INTERLUDES

*Wed & Sun, Dec 6 & 10*

Amazing works by new composers and hidden gems from some of the greatest composers of all time performed by MCYO's talented student musicians.



### STRATHMORE CHILDREN'S CHORUS A WORLD OF CELEBRATION 2023 WINTER CONCERT

*Thu, Dec 14*

Celebrate the holidays with Christmas music from around the world as SCC performs classical, folk, and popular tunes.



## FROM OUR PARTNERS

### BALTIMORE SYMPHONY ORCHESTRA HOW THE GRINCH STOLE CHRISTMAS

*Thu, Dec 7*

### WASHINGTON BACH CONSORT THE CHRISTMAS STORY: BACH'S CHRISTMAS ORATORIO

*Sat, Dec 9*

### THE WASHINGTON CHORUS PRESENTS A CANDLELIGHT CHRISTMAS

*Fri, Dec 15*

### NATIONAL PHILHARMONIC HANDEL'S MESSIAH

*Sat & Sun, Dec 16 & 17*



## GIFT *the* GOOD STUFF!

### GIFT CERTIFICATES

Concert tickets and flexible Strathmore gift certificates are always in style!

[STRATHMORE.ORG/GIFTCERTIFICATE](https://strathmore.org/giftcertificate)



### IN THE SHOP

Make the Shop at Strathmore your go-to for gifts sure to please everyone on your holiday list! You'll find original art and beautiful crafts, handmade jewelry, and one-of-a-kind treasures.

Shop online at [STRATHMORE.ORG/SHOP](https://strathmore.org/shop)



Photo by David Stuck



# MRS. CLAUS & MORE

## Volunteer Janey Richards' Tea-time Theatrics

Pop by the Mansion at Strathmore on a Tuesday and Wednesday, and you're likely to find Janey Richards, with her blue-streaked bangs, checking in tea guests at the front desk. However, you might also spot Richards, a dedicated Strathmore volunteer, drawing on her theatrical background to perform at specialty teas. This December, she'll reprise her role as Mrs. Claus for the holidays, a tradition she's upheld for more than a decade.

### WHY DO YOU ENJOY VOLUNTEERING AT TEA IN THE MANSION?

The camaraderie I share with my fellow volunteers and the staff is remarkable. It's a group of smart, capable women who enjoy working together in this beautiful, historic home, serving delicious food to lovely guests who've come to have a delightful afternoon tea and listen to live music. Seriously, what's not to like?

### OCCASIONALLY YOU DRESS UP IN CHARACTER FOR THEMED TEAS. WHO HAVE YOU PORTRAYED, AND WHICH HAVE BEEN YOUR FAVORITES?

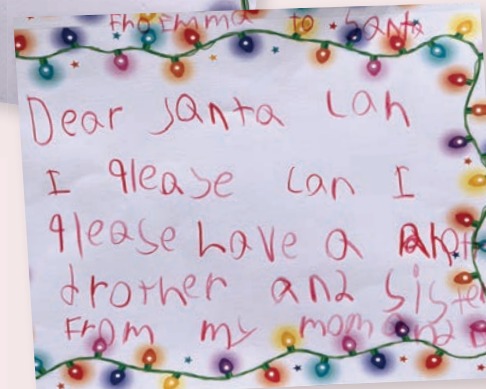
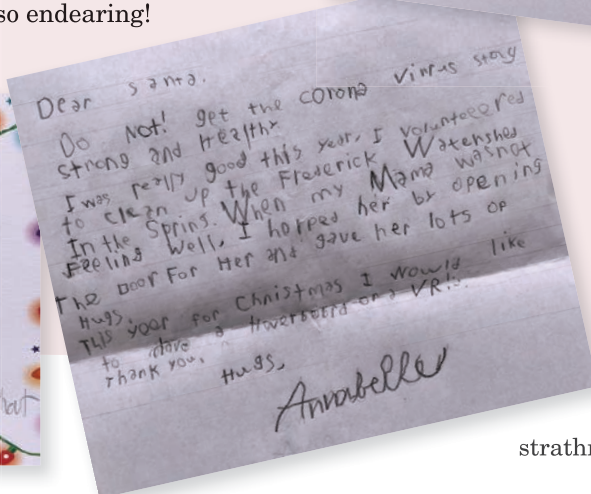
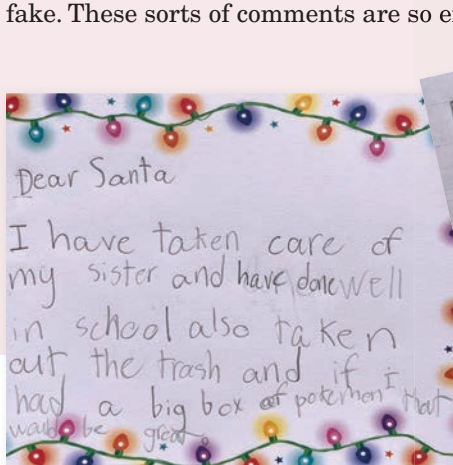
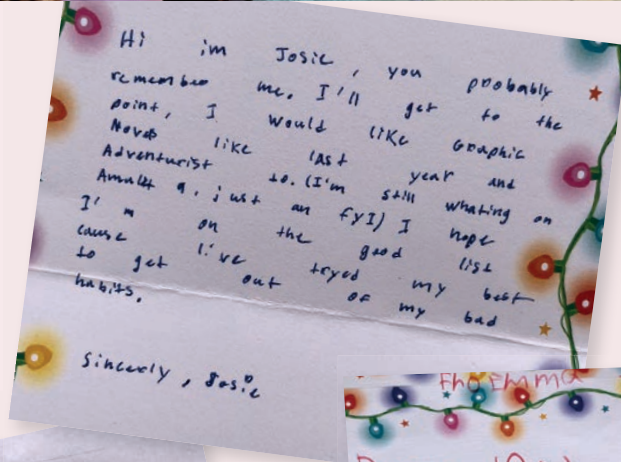
I take part in various specialty teas, including Emily Dickenson, Edgar Allen Poe, Shakespeare, Jane Austen, and Charles Dickens. I've also helped create the Downton Abbey Tea, the Haunted Tea, and the Historical Tea, actively participating in those as well. Children's teas have been very special, too. Dressing up as Mrs. Claus, the Queen of Strathmore, and Corduroy Bear is fun! I wish I could choose a favorite, but quite frankly, I cannot. Strathmore tea guests are such a wonderful audience to perform for; it is pure joy sharing each and every script.

### WHAT DO YOU ENJOY MOST ABOUT PLAYING MRS. CLAUS?

I love it when the children are convinced that my character is real. Several times I've heard older siblings explaining to younger siblings that I am the true Mrs. Claus and the one at some other location was fake. These sorts of comments are so endearing!



Ryan Walker



# SEÁN HEELY IS TOP FIDDLE AT CELTIC CHRISTMAS

*Rising star is first AIR alum to headline a Music Center show*

by Barbara Ruben

Seán Heely, a US National Scottish Fiddle Champion, has bowed breakneck reels during his Artist in Residence (AIR) concert in the Mansion at Strathmore and played ancient Gaelic carols at AMP by Strathmore. But when he takes the stage in the Music Center at Strathmore for Seán Heely's Celtic Christmas on December 8, he will be playing to his largest audience ever—and will have one of his largest ensembles, with about 25 other musicians and dancers.

Heely is the first of more than 100 AIR alum to headline a show in the Concert Hall. Each year, Strathmore mentors six musicians, ages 16 to 32, in a program that offers professional development seminars and high-visibility performance and collaboration opportunities.

“One of the things that AIR gives rising artists is the space to become the performer they're capable of being. It's really fun and inspiring to see someone progress from the AIR program to the Concert Hall stage,” says Joi Brown, Strathmore's artistic director and vice president of programming.

Heely brought a smaller version of his Celtic Christmas show to AMP in 2019 and 2021. He performed a full version last year at Hylton Performing Arts Center in Manassas, which seats approximately 1,100.

As for Strathmore's 2,000-seat Concert Hall, “It's a big room and quite an honor,” says Heely. “For a show like this we're pulling out all the stops, with an eight-piece group plus dancers and the MacMillan [Bag] Pipe Band.”

Scottish fiddling virtuoso Bonnie Rideout served as Heely's mentor while in the AIR program. “She had an incredibly successful Scottish Christmas tour and is a real pinnacle of achievement—a model for how to do it. It's wonderful to see him picking this up as the next generation,” Brown says.

In addition to Rideout's support, Heely says, “AIR introduced us to a lot of people who represent high-profile venues. All of us who are part of the Strathmore family still get gigs in part because of that network.”

Heely hopes to take the Celtic Christmas show on a nationwide tour and release an album of Christmas music at some point. He credits the AIR program for helping launch the show onto a bigger stage and for preparing him to tour around the country, as well as in Scotland.

“I'm always shooting for the stars. Honestly, I didn't think it would be this early,” Heely says of next month's show. “I'm really pleased, chuffed as they say.”

*Strathmore extends its gratitude to the many generous donors who invest in the AIR program and help to nurture the potential of these talented artists.*




Jordan Koepke Photography



# ARTIST IN RESIDENCE

Get your tickets to the class of 2024's concerts

 All concerts at AMP

## ALFRED YUN, PIANO

Dramatic, playful, conceptual

Paired with AIR donors Karen Deasy<sup>♫</sup> and Carolyn & Martin Shargel

Jan 10

Fusing jazz with K-pop, traditional Korean music, hip hop, and more, pianist Yun performs original compositions that reflect his experience growing up in Korea and the United States.

Jan 24

Jazz pianist Yun explores new sounds influenced by electronic and modern classical music, experimental rock, and interpretations of Thelonious Monk.



## MARTY RISEMBERG, PERCUSSION

Experimental, introspective, playful

Paired with AIR donors Carol & Joe Danks<sup>♫</sup>, Karen Lefkowitz & Al Neyman, and J. Alberto Martinez & Anna Pigotti

March 13

Alongside his band, drummer Risemberg premieres unreleased songs as well as collaborative original compositions, featuring deep grooves, ethereal harmonies, and improvisation. Combining vocals, drums, electric guitar, and bass, the band's sound ranges from rhythmic, complex jazz fusion to bold, adventurous rock.

March 27

Percussionist Risemberg leads an all-star ensemble of local talent performing original music that explores the spectrum of time and timbre. Using midi and modular synthesizers, Risemberg layers electronic sounds with driving rhythms influenced by jazz, evoking a feeling of percussive depth and complexity.



## ZOË JORGENSON, BASS

Introspective, dynamic, melodic

Paired with AIR donors Daniel & Sarah Gallagher<sup>♫</sup>, Ellen & Michael Gold<sup>♫</sup>, Richard & Melba Reichard<sup>♫</sup>, and Ava Kaufman

Feb 14

Playing acoustic bass, Jorgenson strums up an eclectic evening of modern jazz and original compositions inspired by acclaimed contemporary instrumentalists.

Feb 28

Jorgenson leads a trio on electric bass and vocals, playing post rock and folk, visualized on an LED big screen for a seamless, ambient experience.



## PARKER SPEIRS, GUITAR

Eclectic, deliberative, adventurous

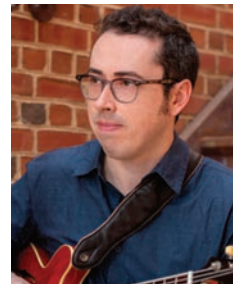
Paired with AIR donors Jamie & Jessica McIntyre<sup>♫</sup>, Tina & Art Lazerow, and Myrna Sislen

April 10

Speirs takes the stage for an eclectic, guitar-driven concert of jazz standards, classic rock, and original compositions.

April 24

Acclaimed trio The Inventures, featuring guitarist Speirs, presents music from their latest album, offering a fresh perspective on great symphonic works through the lens of jazz and rock. The group will also perform their provocative takes on Bach, Chopin, Beethoven, and other classical composers.



## SNEHESH NAG, SITAR

Soulful, funky, chaotic

Paired with AIR donors Jean & Michael Hoyt<sup>♫</sup>, Dale Rosenthal & Michael Cutler<sup>♫</sup>, and Linda & Van Hubbard



May 8

Nag performs Indian *ragas* on sitar and tabla, exploring the deep spiritual energy and dramatism of Hindustani classical music through introspection, crafty compositions, and improvisations.

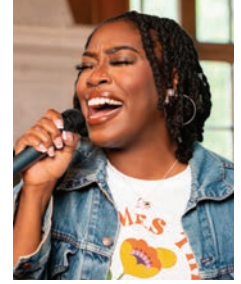
May 22

Sitarist Nag, accompanied by guest artists, blends traditional Indian music with rock, electronica, and jazz, creating a soulful and funky soundscape punctuated by audio-reactive visuals.

## KAIYLA GROSS, VOCALS

Healing, soulful, high-spirited

Paired with AIR donors Hope Eastman & Allen Childs<sup>♫</sup>, Bayo & Funke Oyewole<sup>♫</sup>, Victoria J. Perkins<sup>♫</sup>, and HelenLouise Pettis<sup>♫</sup>




June 12

From Broadway classics to contemporary showstoppers, Gross' arrangements of favorite musical theater songs honor the essence of the originals while presenting them in a new, mesmerizing light.

June 26

R&B and gospel singer-songwriter Gross (aka Gëtte) fuses soulful and spiritual rhythms for a harmonious blend of old school classics, contemporary hits, and originals.

In-kind support provided by 

Program supported in part by Cathy Bernard / Bernard Family Foundation<sup>♫</sup>

<sup>♫</sup>Strathmore graciously thanks our Artist In Residence Champions for their multi-year commitment and above-and-beyond support of the AIR program.

# W'AIR ARE THEY NOW?

Langston Hughes II, Class of 2022



When it came time to choose an instrument in middle school, Langston Hughes II picked the saxophone because he thought it looked cool. "Looking back," says the Artist in Resident (AIR) alum, "I'm so grateful I did. The saxophone is the instrument that most closely delivers the sound that I hear in my head."

A recent graduate of Howard University, the award-winning multi-instrumentalist, composer, and bandleader is now pursuing a graduate degree in jazz studies at The Juilliard School in New York City.

## WHAT ARE YOUR IMPRESSIONS OF JUILLIARD SO FAR?

Starting the school year at Juilliard has been quite an experience. Juilliard is one of the most rigorous programs globally and is home to some of the most talented young cats in the world. Adjusting to this level of intensity has been a challenge, but I'm beginning

to realize that being constantly surrounded by such incredible talent is a true privilege. It's an environment that forces one to grow.

## HAVE YOU MADE ANY PROFESSIONAL CONNECTIONS WITH OTHER AIR ALUM?

Strathmore AIR is a unique program because its alumni are highly active figures in the music scene. Recently, I've done a few gigs with several AIR alumni, including musicians like James Fernando, Jo Palmer, Eliot Seppa, and AYO, to name a few. I've also developed a pretty close relationship with my AIR mentor, Leigh Pilzer, an invaluable figure who has helped me with so much.

## WHAT'S NEXT?

I'm currently focusing on honing my craft during my time in New York. Being at Juilliard, in the heart of the city, provides a unique opportunity to leverage the connections and resources available to me. In addition to my academic commitments, I'm also maintaining a regular performance schedule with my band.



# STRATHMORE'S COMMUNITY COMMITMENT

*Bringing the arts to every corner of Montgomery County*

by Barbara Ruben

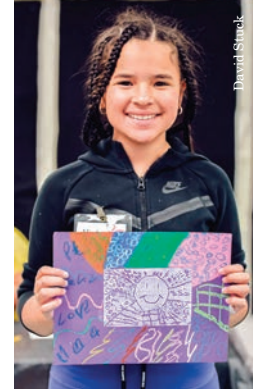
From its tuition-free Latin Strings and Percussion program in three Gaithersburg schools to its free concerts at Silver Spring's Good Hope Neighborhood Recreation Center, Strathmore is on a mission to ensure that the arts are accessible to everyone. This commitment resonates deeply with Strathmore's president and CEO, Monica Jeffries Hazangeles, who recently discovered the convergence of Strathmore's community-oriented Bloom programs with Montgomery Planning's designated equity focus areas, where residents need enhanced access to essential resources and services.

As Jeffries Hazangeles researched ways to illustrate Bloom's reach for a board meeting, she stumbled upon Montgomery Planning's Thrive Montgomery 2050 map, outlining targeted communities from Germantown to Takoma Park. Thrive Montgomery's comprehensive plan seeks to promote equity through policy planning and investments in historically marginalized communities. When Jeffries Hazangeles plotted Bloom's programs over top the map, she learned they aligned nearly completely with the communities identified as equity focus areas, home to 26% of the county's population.

"It's truly gratifying to see that Strathmore's Bloom activities have been thriving in these communities for years," says Jeffries Hazangeles.

The Bloom by Strathmore initiative collaborates with nonprofits, schools, and community organizations to offer free and low-cost arts programs across the county. From pop-up stages at local festivals, to the Arts and Social Justice Fellowship for high schoolers, to after-school dance instruction from Step Afrika!, these programs touch the lives of over 25,000 students and community members annually.

**"The exposure to the arts is invaluable as it broadens horizons, encourages creativity, and cultivates a deep sense of cultural appreciation."**



David Stuck



AIR alum AYO performs at Good Hope Neighborhood Recreation Center.



David Stuck

Liz Lynch



Creating mindfulness jars at Linkages to Learning summer camp.

A community collaboration with Good Hope Neighborhood Recreation Center in eastern Montgomery County, for example, offers year-round free performances—many of which feature alum from Strathmore’s Artist in Residence program.

“This partnership with Bloom at Good Hope Neighborhood Recreation Center was designed for and is bringing art enrichment opportunities to an area of the county that didn’t always have access to the arts,” says Montgomery County Recreation Director Robin Riley. “It’s great to watch family and friends come together on Saturdays to enjoy the atmosphere and entertainment of Bloom’s free concert series.”

“Since the beginning of 2015, we’ve been co-creating alongside the community,” says Lauren Campbell, Strathmore’s vice president of education and community engagement. “Our impact is forged through enduring, trust-based partnerships with our collaborators, who guide us every step of the way.”

Another notable example is YMCA Linkages to Learning summer camp at New Hampshire Estates Elementary School in Silver Spring, emphasizing yoga, creative arts, and theater for predominantly Hispanic and recently arrived US students. This summer, Strathmore responded to the YMCA’s call for bilingual teaching artists who could empathize with the students’ experiences. It also enlisted a local woman-owned catering business to provide the camp meals.

“These families often struggle to find nearby summer camps that are affordable, fun, and engaging,” says Lucy Mejia, the YMCA’s newcomer family case manager. “Strathmore has played a pivotal role in bridging that gap with programming that meets the needs of our community during these crucial summer months.”

In addition, Strathmore collaborates with another Silver Spring school, JoAnn Leleck Elementary School at Broad Acres, to create year-round experiences that include an annual Spring Break Camp, where fourth and fifth graders are immersed in theater, dance, and art projects.

“This partnership is a shining example of what can be achieved when a school and a cultural institution come together with a shared vision of nurturing young minds and fostering a love for the arts,” says JoAnn Leleck’s assistant principal, Kristen Reza

In every program and collaboration, Strathmore centers the priorities of a neighborhood or partner to deliver what’s most desired. Jeffries Hazangles explains that access to the arts should reflect the variety of cultures, interests, and traditions across communities. The overlap between the locations of Strathmore’s Bloom programs with Thrive Montgomery’s designated areas of focus proves the arts often lead positive change, and it signals Strathmore’s collective hope for a more equitable and enriched future across the county.

“We firmly believe that access to the arts is a fundamental human right,” says Jeffries Hazangeles, “and we are committed to expanding arts access far and wide.”



Student concert at JoAnn Leleck Elementary School.



A Latin Strings and Percussion performance.



# BLOOM BY STRATHMORE

*Bloom is about helping the arts thrive and making sure that everyone has a chance to experience them. This map shows approximate locations of current Bloom programs.*



- Thrive Montgomery 2050 equity focus area
- ★ Strathmore community & access program

# EXHIBITIONS

## CURRENT EXHIBITIONS

*Thru Jan 13*

*Perspective*

### CORIOLANA SIMON

Silver Spring artist Simon's photography reinterprets the style and spirit of 17<sup>th</sup> century Dutch still life paintings creating elegant compositions and delicate lighting to reflect on the impermanence of the material world.

### THE 90<sup>TH</sup> ANNUAL EXHIBITION OF FINE ART IN MINIATURE

The Miniature Painters, Sculptors, and Gravers Society of Washington, DC (MPSGS) brings over 700 mini masterpieces from across the globe for this juried exhibition. Celebrate the 90<sup>th</sup> anniversary of this massive exhibition, featuring stone, oil, pastel, and print pieces from the size of a postcard down to a postage stamp.

*Invitational Gallery*

### HER LEGACY KAREN BENDERSKY

MPSGS of Washington, DC's 2022 scholarship recipient returns to Strathmore in her first solo show focusing on the power and permanence of all things feminine. She highlights the experiences of women with tactile messages hidden throughout her work.

*Generous support for the Invitational Gallery exhibitions is provided by HelenLouise Pettis.*

## ART AHEAD

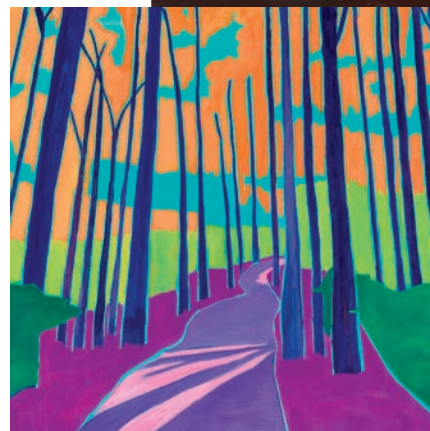
*Jan 26–March 2*

*Opening Reception: Thu, Feb 1*

### 32<sup>ND</sup> ANNUAL STRATHMORE JURIED EXHIBITION PRISM: CONNECTIONS IN COLOR

When light passes through a prism, it separates into wavelengths that bend at different angles, creating a sequence of colors familiar to all. This juried exhibition challenges artists to communicate through color, using a range of media, subject matter, and styles.

**STRATHMORE.ORG/EXHIBITIONS**



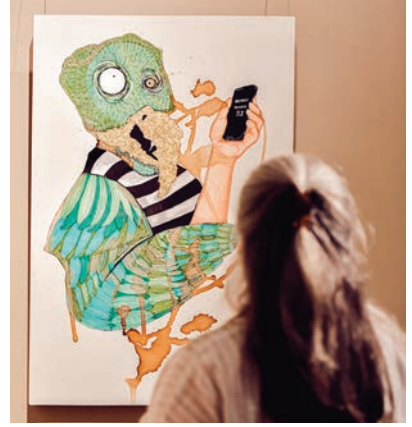
*Still Life on the Edge of Enlightenment by Coriolana Simon, Big Ben by Viviane de Kosinsky, Hey Hottie by Karen Bendersky, Fall Scene by Julie Gross*



# STRATHMORE *Snapshots*

## *A “wild” night*

Artists and art lovers gathered in the Mansion on September 14 to support one another’s achievements and creative endeavors. The evening reception marked the opening of three new exhibitions, including *Animal Kingdom: All Beasts Great and Small*.



Photos by David Stuck

# ORCHESTRATING CHANGE

*New conductor brings depth and diversity to second grade concerts*

by Barbara Ruben

Alistair Coleman still remembers the stirring sounds of Leonard Bernstein's overture to *Candide* that the National Philharmonic performed when he and his Bethesda Elementary School classmates—along with 1,500 other second graders—visited Strathmore 17 years ago.

“That was my first time hearing an orchestra live, and I distinctly remember that field trip, probably because music has become such a part of my life,” says Coleman, who went on to attend The Juilliard School. He is now a composer who has won numerous awards, and his commissioned works have been played internationally. “As a tiny, little second grader walking into the Concert Hall, it feels like a whole world, a big expansive place. But it’s not intimidating. It’s very open and welcoming,” he says.

Montgomery County second graders have attended Strathmore student concerts since 2004, months before the Music Center opened to the public in 2005. In a partnership between Strathmore and Montgomery County Public Schools (MCPS), the concerts, held over four consecutive days in November, feature the National Philharmonic performing such favorites as John Williams’ theme from *Star Wars* and Beethoven’s *Symphony No. 5*. Those pieces will still be part of this year’s program for the 12,000 students filling the Concert Hall that week, but new material will add diversity and depth to the repertoire.

For example, new to the program is a traditional Nigerian children’s song, “Stand Up Sit Down” (“Simama Kaa” in Swahili), added to help represent music of the many MCPS students whose families come from West Africa. The concert will open with “Paconchita,” by Latin American composer Oscar Navarro, which includes the full orchestra, plus drums and a brass section.

This new content was developed by Naima Burrs, who will be conducting the second grade concerts for the first time this year. Brought on by the National Philharmonic, Burrs worked closely with the MCPS Fine Arts Office and Strathmore’s education team to ensure the new works align strongly with the county’s second grade music curriculum.

“We are finding a way to bridge between old and new, bringing in a diverse group of composers while paying homage to classic composers. Kids should have exposure to all of this,” says Burrs. She also says it’s important for students to have a diversity of role models. Burrs, who is African American, is the music director of the Petersburg Symphony Orchestra, in residence at Virginia State University. She also conducts the University of Richmond Symphony Orchestra.



Naima Burrs, the new conductor of the second grade concerts.





“What we strive to do is open the students’ eyes to what is possible. It’s much more realistic when they think, “That person looks like me and plays that instrument. I can identify with that,” she says.

Burrs says that although she grew up as a daughter of a professional musician, it wasn’t until a string quartet came to her elementary school that she felt like music was something she, too, wanted to pursue.

That’s also part of Strathmore’s goal for these concerts. “We’re very proud to reach this many children on an annual basis,” says Lauren Campbell, Strathmore’s vice president of education and community engagement. “We hope to inspire all these young people to become lifetime music lovers. And, of course, it’s a dream if we get even 5% of kids who are over the moon and dazzled and ready to try out an instrument.”

Part of instilling a love of orchestral music in students starts before they ever set foot in Strathmore’s Concert Hall.

MCPS builds a robust curriculum to support this experience for students and provides lesson plans that teachers can adapt for their classrooms. Students listen to the pieces ahead of the concert and learn about the four families of instruments: woodwinds, percussion, brass, and strings. Movement and singing are also part of the lessons so students get a feel for the music—and to reinforce the concepts with their bodies.

A major focus of the lesson plans has always been on student participation.

“For example, instead of telling students what the piece is about, teachers ask why they think a composer made these musical choices. This causes our students to be more engaged listeners rather than passive listeners,” says Katie Murphy, coordinator of choral and general music for MCPS.

For Murphy, the culmination of those lessons at Strathmore is one of the highlights of her job, especially for students who may not otherwise have an opportunity to hear a live orchestra perform.

“Giving this experience to all students is a way to level the playing field,” she says. “Hearing 1,500 to 1,800 children singing along with an orchestra is just life affirming.”



*Strathmore is deeply grateful to the following institutions who make the second grade concerts possible through their generous support: Paul M. Angell Family Foundation, GEICO Philanthropic Foundation, Jordan Kitts Music / Rockley Family Foundation, Lockheed Martin, and Montgomery County Public Schools.*

# Q&A:

## *Mandy Patinkin, Kathryn Grody & Gideon Grody-Patinkin*

Ahead of their Valentine's Day appearance in the Music Center, we asked Mandy Patinkin and his wife, Kathryn Grody, some lovey-dovey questions about their marriage. Then, we challenged their son Gideon Grody-Patinkin, who is responsible for his parents' recent social media fame and will be moderating the February 14 event, to guess how they would answer them.



### **WHAT IS THE KEY TO YOUR ENDURING MARRIAGE?**

**MANDY:** Our mutual unwillingness to never give up or let go of our deep connection, no matter what our troubles appear to be.

**KATHRYN:** Hmm . . . humor is essential, but I suppose as difficult as life has sometimes been as a couple, I couldn't imagine life at all without my husband. Being without him as my life partner seemed a little death to me. So, taking the long view to deal with the short, immediate agonies.

**GIDEON:** Codependency.

### **WHAT IS YOUR SPOUSE'S BEST TRAIT?**

**MANDY:** Her never ending commitment to her community of true lifelong friends.

**KATHRYN:** His humor, his curiosity, and his fierce care for his family's welfare—short term and long. Never ever giving up on being a better version of himself and trying to do some daily goodness, and reminding me to be in the present moment and not spend hours foreseeing future disasters.

**GIDEON:** Dad would say Mom's ability to make deep and enduring friendships. Mom would say Dad's generosity, loyalty, and dependability to his family and loved ones.

### **WHAT IS YOUR SPOUSE'S MOST IRRITATING HABIT?**

**MANDY:** Never putting the food back in the refrigerator.

**KATHRYN:** Continuously asking me for something "crunchy" and to fetch him things when we are both comfortably sitting together.

**GIDEON:** Dad would say that Mom never stops talking. Mom would say that Dad won't talk to her enough.

### **WHAT IS THE MOST ROMANTIC GESTURE YOUR SPOUSE EVER MADE?**

**MANDY:** Early on in our courtship, Kathryn told me emphatically she's never getting married because she didn't believe in marriage.

**KATHRYN:** On my 31<sup>st</sup> birthday, he blindfolded me and took me on a carriage ride around Central Park at dusk.

**GIDEON:** Once it was pouring rain, and they were rushing to get my mom to an important appointment. My dad was going to drop her off and then continue home a few blocks away. He was trying to get her to jump over this massive puddle, and she just couldn't bring herself to do it and get wet. Without missing a beat, my dad laid his body down in the puddle and convinced her, through fits of laughter and tears of charmed gratitude, to walk over his body across the miniature lake to safety. She made her appointment unblemished while he sauntered back home dripping and covered in a soggy putrescence of NYC street juice. What a guy! (In all honesty, my dad just offered me \$5 to make him look good).

### **WHAT IS THE SILLIEST SUBJECT YOU EVER HAD A FIGHT ABOUT?**

**MANDY:** When it comes to home renovation, her unwillingness to change anything and my desire to change everything.

**KATHRYN:** We had a fierce and ridiculous fight about an antique bench we bought and whether to return it or to make it fit. If you had heard it, you would have assumed it was seriously about life or very much death!

**GIDEON:** Whether or not an old bench was a good fit for the living room. It nearly broke them.

### **WHAT IS YOUR FAVORITE SONG TO DANCE TO TOGETHER?**

**MANDY:** Any great '40s big band-era jitterbug number.

**KATHRYN:** Actually, we do not dance together because he is a great dancer and likes to lead, and I'm not good at following. But we have swayed together to "A, You're Adorable," and I occasionally try to turn swaying into any kind of waltz.

**GIDEON:** "WAP" [by Cardi B. with Megan Thee Stallion].

*Happy Valentine's Day, everyone!*



# WINTER CALENDAR

*Strathmore Presents*  
**MANNHEIM STEAMROLLER CHRISTMAS BY CHIP DAVIS**

*Fri, Dec 1, 8pm*  
 Kick off the holiday season with Mannheim Steamroller's beloved Christmas music and dazzling multimedia effects.  
**MUSIC CENTER**



*Outside Presenter*  
**NUTCRACKER! MAGICAL CHRISTMAS BALLET**

*Sat, Dec 2, 3pm & 7pm*  
 Ukrainian ballet's principal artists celebrate the holidays with jaw-dropping acrobatics, larger-than-life puppets, and stunning hand-crafted sets and costumes.  
**MUSIC CENTER**

*Strathmore Presents*  
**DAVE KOZ AND FRIENDS CHRISTMAS TOUR 2023**

Featuring: Jonathan Butler  
 With Special Guests: Rebecca Jade and Marcus Anderson  
 Introducing: Justin Lee Schultz  
*Sun, Dec 3, 8pm*  
 Jazz saxophonist's 26th annual Christmas tour returns to Strathmore, a must-see staple of the holiday season.  
**MUSIC CENTER**

*Maryland Classic Youth Orchestras of Strathmore*  
**SYMPHONIC INTERLUDES**

*Wed, Dec 6, 7:30pm*  
*Sun, Dec 10, 2pm & 7pm*  
 Amazing works by new composers and hidden gems from some of the greatest composers of all time performed by MCYO's talented student musicians.  
**MUSIC CENTER**



*Baltimore Symphony Orchestra*  
**HOW THE GRINCH STOLE CHRISTMAS IN CONCERT**

*Thu, Dec 7, 7:30pm*  
 Discover the magic of the mean one this holiday season. Dr. Seuss' *How the Grinch Stole Christmas* is a celebration of the holiday spirit no home should be without! © 2023 Universal Studios. All Rights Reserved.  
**MUSIC CENTER**

*Strathmore Presents*  
**MINIATURE PAINTING WORKSHOP**

*Fri, Dec 8, 10am*  
 Discover how to paint a miniature in a five-hour class led by noted miniature artist Nancy Van Meter.  
**MANSION**

*Strathmore Presents*  
**SEÁN HEELY'S CELTIC CHRISTMAS**

*Fri, Dec 8, 8pm*  
 Award-winning fiddler Heely leads a journey through the winter traditions of Scotland and Ireland, featuring bagpipe and traditional dancers.  
**MUSIC CENTER**

*Outside Presenter*  
**WASHINGTON BACH CONSORT: THE CHRISTMAS STORY BACH'S CHRISTMAS ORATORIO**

*Sat, Dec 9, 7pm*  
 Called a "splendid" and "joyful" holiday performance by *The Washington Post*, this Baroque choral masterpiece tells the Nativity story, featuring an all-star cast of soloists.  
**MUSIC CENTER**

*Outside Presenter*  
**SNOW WHITE & THE SEVEN DWARFS**

*Wed, Dec 13, 7:30pm*  
 The State Ballet Theatre of Ukraine brings this beloved fairy tale to life with 50 exceptional ballet dancers.  
**MUSIC CENTER**

*Strathmore Children's Chorus*  
**A WORLD OF CELEBRATION 2023 WINTER CONCERT**

*Thu, Dec 14, 7:30pm*  
 SCC celebrates the holidays with Christmas music from around the world, featuring classical, folk, and popular tunes.  
**MUSIC CENTER**

*Outside Presenter*  
**THE WASHINGTON CHORUS PRESENTS A CANDLELIGHT CHRISTMAS**

*Fri, Dec 15, 8pm*  
 Ring in the season (literally!) as this festive chorus and special guests help you celebrate a beloved holiday tradition.  
**MUSIC CENTER**

*Strathmore Presents*  
**A HOLIDAY EVENING WITH DOMINIQUE BIANCO**

*Sat, Dec 16, 5pm*  
 Artist in Residence alum Bianco adds her distinctive jazz voice to timeless holiday tunes and originals.  
**GOOD HOPE RECREATION CENTER**

*National Philharmonic*  
**HANDEL'S MESSIAH**

*Sat, Dec 16, 7:30pm*  
*Sun, Dec 17, 3pm*  
 NatPhil presents this Baroque choral masterpiece, conducted by Maestro Piotr Gajewski, in a new semi-staged dramatic rendering.  
**MUSIC CENTER**

*Strathmore Presents*  
**THE HIP HOP NUTCRACKER**

**WITH GUEST MC KURTIS BLOW**  
*Tue, Wed & Fri, Dec 19, 20 & 22, 8pm*  
*Thu, Dec 21, 2pm & 8pm*  
 The *Hip Hop Nutcracker* presents Tchaikovsky's classic score, reimaged with explosive hip-hop choreography, all-star dancers, an on-stage DJ, and an electric violinist.

*Strathmore extends its gratitude to AARP for supporting our programs and for making this performance possible.*  
**MUSIC CENTER**

*Strathmore Presents*  
**VIRTUAL CREATIVE WRITING WORKSHOPS**

*Thu, Dec 21, Jan 18 & Feb 15, 7pm*  
 In this series of workshops, accomplished contemporary authors offer perspectives on their craft and guide participants through a series of writing prompts.  
**ONLINE**

*Outside Presenter*  
**A JOYFUL HOLIDAY  
 SAMARA JOY  
 FEATURING THE  
 MCLENDON FAMILY**  
*Sat, Dec 23, 8pm*

Winner of the 2023 Grammy Awards for best jazz vocal album and best new artist, Joy presents a combination of holiday songs and those from her repertoire that will appeal to fans of Sarah Vaughan and Sade alike.  
**MUSIC CENTER**

*Outside Presenter*  
**ATTILA GLATZ CONCERT  
 PRODUCTIONS PRESENTS  
 SALUTE TO VIENNA  
 NEW YEAR'S CONCERT**  
*Sat, Dec 30, 3pm*

Timeless music, dazzling costumes, breathtaking dance, and stunning floral designs make for an unforgettable New Year's celebration.  
**MUSIC CENTER**

*Baltimore Symphony Orchestra*  
**MOZART'S JUPITER  
 SYMPHONY**  
*Sun, Jan 7, 3pm*

An audience favorite, Mozart's symphonies are as faultless and brilliant as sparkling diamonds. Pianist Yulianna Avdeeva joins the BSO to play Mozart's *Piano Concerto No. 23*.  
**MUSIC CENTER**

*Artist in Residence Concerts*  
**ALFRED YUN**  
*Paired with AIR donors  
 Karen Deasy and  
 Carolyn & Martin Shargel*  
*Wed, Jan 10, 8pm*

Yun performs original compositions that reflect his experience growing up in Korea and the United States.  
**AMP**



Margot Schahman

*Strathmore Presents*  
**STRATA TRIO**  
*Thu, Jan 11, 7:30pm*

Strata's repertoire spans genre, time, and place to create a diverse program of works for duo and trio.  
**MANSION**



*Baltimore Symphony Orchestra*  
**SHE'S GOT SOUL**  
*Thu, Jan 11, 8pm*

The sensational Capathia Jenkins brings her powerhouse voice to a wide-ranging revue of R&B classics and soulful hits, including music from Toni Braxton, Adele, Stevie Wonder, and more.  
**MUSIC CENTER**

*Artist in Residence Workshop*  
**ALFRED YUN  
 CHUNKING VS SEPARATION:  
 WESTERN VS KOREAN RHYTHMS**  
*Wed, Jan 17, 7:30pm*

Jazz pianist Yun leads a demonstration of various Korean rhythms and explores how they differ from the Western rhythmic tradition.  
**MANSION**

*Baltimore Symphony Orchestra*  
**MOZART CLARINET  
 CONCERTO**  
*Thu, Jan 18, 8pm*

Jun Märkl conducts the music of Strauss, Mozart, and Messiaen. Principal Clarinet YaoGuang Zhai masterfully plays the concerto that Mozart wrote for a dear friend.  
**MUSIC CENTER**

*Baltimore Symphony Orchestra*  
**BSO MUSIC BOX**  
*Sat, Jan 20, 10am & 11:30am*  
 Maria Broom and a BSO string quartet will be featured in this children's program. Get ready to learn about life down on the farm through songs about your favorite animals!  
**AMP**

*Strathmore Presents*  
**THE MANSION WEDDING  
 OPEN HOUSE**  
*Sat, Jan 20, 10am*

Tour the Mansion set up for an array of events and enjoy delicious bites and cocktails from Strathmore Culinary Arts and preferred caterers. Special rates available for booking an event during the open house!  
**MANSION**

*Strathmore Presents*  
**DRUM TAO 2024**  
*Sat, Jan 20, 8pm*

Drum TAO pairs traditional Japanese percussion with intense physicality for a dynamic, one-of-a-kind instrumental performance.  
**MUSIC CENTER**



*Artists in Residence Concerts*  
**ALFRED YUN**  
*Paired with AIR donors  
 Karen Deasy and  
 Carolyn & Martin Shargel*  
*Wed, Jan 24, 8pm*

Yun explores sounds influenced by electronic and modern classical music, experimental rock, and interpretations of Thelonious Monk.  
**AMP**

*Strathmore Presents*  
**JAZZ AT LINCOLN CENTER  
 ORCHESTRA  
 WITH WYNTON MARSALIS  
 MAX ROACH AT 100**  
*Fri, Jan 26, 8pm*

Led by Marsalis, the JLCO celebrates the centennial of drummer Max Roach and his dedication to social justice through music.  
**MUSIC CENTER**



Lawrence Sumblon

*Strathmore Presents*  
**SENSORY-FRIENDLY  
 CONCERT HALL TOURS**  
*Sat, Jan 27, 11am*

Young people with autism or sensory sensitivities are invited to tour the Concert Hall in small groups. Stand on the stage, see the artists' green rooms, learn how lights and sound work, and much more during this free educational experience.  
**MUSIC CENTER**

*Baltimore Symphony Orchestra*  
**BACK TO THE FUTURE  
 IN CONCERT**  
*Sat, Jan 27, 7:30pm*

Fans old and new will experience the thrill of *Back to the Future* on a big hi-def screen with a full symphony orchestra performing Alan Silvestri's dazzling musical score live on stage.  
 © Universal City Studios LLC and Amblin Entertainment, Inc. All Rights Reserved.  
**MUSIC CENTER**

*Strathmore Presents*  
**PRISM OPENING  
 RECEPTION**  
*Thu, Feb 1, 7pm*

Mix and mingle with artists and art lovers to celebrate the opening of the *Prism* juried exhibition, in which artists communicate through color using a range of media, subject matter, and styles.  
**MANSION**



*Baltimore Symphony Orchestra*  
**GERSHWIN  
 RHAPSODY IN BLUE**  
*Sat, Feb 3, 8pm*

A noted Gershwin interpreter at the keyboard, Wayne Marshall celebrates the 100<sup>th</sup> anniversary of *Rhapsody in Blue*. American composers Copland and Bernstein are also featured.

**MUSIC CENTER**

*Annapolis Symphony Orchestra*  
**RAGING FIRE**  
*Sun, Feb 4, 3pm*

The Annapolis Symphony Orchestra presents Narong Prangcharoen's *Raging Fire*, Sibelius' *Violin Concerto* in D minor with guest artist and violinist Elissa Lee Koljonen, and Tchaikovsky's *Pathétique*.

*Strathmore & CityDance Present*  
**BALLET HISPÁNICO**  
*Thu, Feb 8, 8pm*

Ballet Hispánico celebrates and explores Latino culture through bold and eclectic contemporary dance.

**MUSIC CENTER**



Paula Lobo

*Baltimore Symphony Orchestra*  
**BSO FUSION: THE  
 RESURRECTION MIXTAPE**  
*Fri, Feb 9, 8pm*

A transformative exploration of life, death, legacy, struggle, and triumph, this performance fuses the classic hip hop of Notorious B.I.G. and Tupac Shakur with Mahler's *Resurrection* symphony.

**MUSIC CENTER**

*National Philharmonic*  
**DVOŘÁK SYMPHONY NO. 7**  
*Sat, Feb 10, 7:30pm*

NatPhil joins forces with dynamic guest conductor Jeri Lynne Johnson for Valerie Coleman's *Phenomenal Women* and Dvořák's *Symphony no. 7*.

**MUSIC CENTER**

*Strathmore Presents*  
**AN EVENING WITH  
 MANDY PATINKIN &  
 KATHRYN GRODY  
 MODERATED BY THEIR SON  
 GIDEON GRODY-PATINKIN**

*Wed, Feb 14, 8pm—  
 Valentine's Day!*

Multitalented couple Patinkin and Grody share stories about love, life, and work. The perfect Valentine's Day date!

**MUSIC CENTER**



Tongle Thiesen

*Artist in Residence Concerts*  
**ZOË JORGENSON**

Paired with AIR donors Daniel & Sarah Gallagher, Ellen & Michael Gold, Richard & Melba Reichard, and Ava Kaufman

*Wed, Feb 14, 8pm*

Jorgenson strums up an eclectic evening of modern jazz and original compositions inspired by acclaimed contemporary instrumentalists.

**AMP**

*Strathmore Presents*  
**LINCOLN TRIO**  
*Thu, Feb 15, 7:30pm*

A Grammy-nominated chamber ensemble of viola, cello, and piano that brings technical excellence to contemporary and classic works.

**MANSION**

# WEDDINGS OPEN HOUSE

*Sat, Jan 20, 10am–2pm*

Join us in the Mansion for an inspirational wedding showcase! Preview the space decorated for a celebration and enjoy some delicious bites and cocktails from Strathmore Culinary Arts and other preferred caterers. Special rates are available for those who book during the event.

RSVP at [STRATHMORE.ORG/OPENHOUSE](http://STRATHMORE.ORG/OPENHOUSE)



● Music Center ● Mansion ● AMP ● Community ● Education



Brian Ganz

Nadia F. Romani

## NATIONAL PHILHARMONIC WINTER CONCERTS

The National Philharmonic is heating things up this winter with three thrilling programs at The Music Center at Strathmore. Start your holiday season with Handel's magnificent *Messiah*, conducted by Maestro Piotr Gajewski on December 16 at 7:30pm and December 17 at 3pm. NatPhil reimagines Handel's masterpiece, drawing on the storytelling of all-star soloists soprano Aundi Marie Moore, mezzo soprano Lucia Bradford, tenor Norman Shankle, and baritone Jorell Williams. On February 10, dynamic guest conductor Jeri Lynne Johnson leads NatPhil in Valerie Coleman's *Phenomenal Women*, telling the stories of poet Maya Angelou, mathematician Katherine Johnson, tennis great Serena Williams, Olympic boxer Claressa Shields, and former First Lady Michelle Obama through jazz, classical, and traditional music styles. Coleman, a Grammy-nominated flutist, will play with a wind quintet assembled for the performance. Johnson ends the program with Dvořák's *Symphony no. 7*—a musical journey of epic proportions. Pianist Brian Ganz returns to the NatPhil stage on February 24 to continue his enduring quest to perform every note the great Polish composer Frédéric Chopin ever wrote. This year's program highlights Chopin's own virtuosity through some of his most challenging compositions, masterfully performed by Ganz.

[NATIONALPHILHARMONIC.ORG](http://NATIONALPHILHARMONIC.ORG)

*Strathmore Presents*  
**BEYOND BABEL**  
 CREATED BY KEONE & MARI & HIDEAWAY CIRCUS

*Fri, Feb 16, 8pm*  
 Critically acclaimed dance theater production tells the contemporary tale of division and lost love inspired by *Romeo & Juliet*. Featuring music from Billie Eilish, Chance the Rapper, Busta Rhymes, and more. Ideal for ages 10 and up.  
**MUSIC CENTER**

*Baltimore Symphony Orchestra*  
**MARIN CONDUCTS**  
**TIME FOR THREE**

*Sat, Feb 17, 8pm*  
 Music Director Laureate Marin Alsop reunites with a favorite composer, Kevin Puts, to present his dazzling concerto for the genre-crossing talents of the Grammy Award-winning string trio Time for Three.  
**MUSIC CENTER**

*Artist in Residence Workshop*  
**ZOË JORGENSON**  
**WHY WE NEED MUSIC: THE IMPACT OF MUSIC EDUCATION**

*Wed, Feb 21, 7:30pm*  
 Strings pedagogue Jorgenson delves into the US music education system and the ever-present need for skilled music educators.  
**MANSSION**



Margot Schulman

*Baltimore Symphony Orchestra*  
**CIRQUE MAGIC**

*Thu, Feb 22, 8pm*  
 The dynamic duo of conductor Jack Everly and Troupe Vertigo return to the stage for a magical set of performances.  
**MUSIC CENTER**

*Strathmore Presents*  
**MAKAYA McCRAVEN**  
**IN THESE TIMES**

*Fri, Feb 23, 8pm*  
 Prolific drummer, producer, and composer McCraven performs post-genre, jazz-rooted, 21<sup>st</sup> century folk music.  
**MUSIC CENTER**



Sullyman

*National Philharmonic*  
**CHOPIN THE VIRTUOSO**

*Sat, Feb 24, 7:30pm*  
 Pianist Brian Ganz returns to the NatPhil stage to continue his enduring quest to perform every note the great Polish composer Frédéric Chopin ever wrote.  
**MUSIC CENTER**

*Artist in Residence Concerts*  
**ZOE JORGENSON**

*Paired with AIR donors Daniel & Sarah Gallagher, Ellen & Michael Gold, Richard & Melba Reichard, and Ava Kaufman*  
*Wed, Feb 28, 8pm*

Playing electric bass and singing, Jorgenson leads a trio playing post rock and folk, visualized on an LED big screen for a seamless, ambient experience.  
**AMP**

*Strathmore Presents*  
**ALMA ENSEMBLE**

*Thu, Feb 29, 7:30pm*  
 This trio highlights chamber music composed by women, with a mission to empower, educate, and challenge the status quo.  
**MANSSION**



Charly Coffin



# Thank you DONORS & SUPPORTERS

Strathmore thanks the individuals and organizations who have made contributions between **July 1, 2022 and June 30, 2023**. Their gift of at least \$500 and continued commitment enables us to spotlight distinctive, dynamic, and diverse artistic voices on stage, on our gallery walls, and throughout our community.

## INSTITUTIONAL GIVING

AARP  
Paul M. Angell Family Foundation  
Arts and Humanities Council of Montgomery County  
Asbury Methodist Village  
Ben & Jerry's of Rockville  
The Morris and Gwendolyn Cafritz Foundation  
Capital One Services Inc. LLC  
Chevy Chase Trust  
Clark Construction Group, LLC  
Clark-Winchcole Foundation  
Dallas Morse Coors Foundation for the Performing Arts  
Embassy of Australia  
Fitzgerald Toyota Gaithersburg  
The Carl M. Freeman Foundation  
GEICO Philanthropic Foundation  
Philip L. Graham Fund  
Olivia Warley Guttoff Memorial Scholarship  
Graham Holdings Company  
Jordan Kitt's Music/Rockley Family Foundation  
Kaiser Permanente  
Dr. Cyrus Katzen Foundation, Inc.  
The Marinus and Minna B. Koster Foundation  
Lerch, Early & Brewer, Chartered  
Lockheed Martin Corporation  
Maryland State Arts Council  
MB Lewis Charitable Foundation  
Pepco – an Exelon Company  
Howard and Geraldine Polinger Family Foundation  
The Nora Roberts Foundation  
Silver Spring Chapter of The Links  
Raymond James Charitable  
Jim and Carol Trawick Foundation  
Wegmans  
WGL Holdings, Inc.

## INDIVIDUAL GIVING

Anonymous (4)  
Jean Accius  
Gwyn and Nancy Ackland Memorial Fund  
Welman, Peilin and Stella Aquino  
Nancy Balph  
Gerilee Bennett  
Cathy Bernard  
Leslie and David Bloom

Alex Bogdanovsky and Elena Shtern  
Diane Braunstein  
Jerome and Harriet Breslow  
Robby Brewer and Connie Lohse  
Trish and Tim Carrico  
Daniel Chung and Evelyn Hyun-Jung JT Ten  
Kenneth Dalton  
Karen Deasy  
Gregory and Avis Dyson  
Hope Eastman and Allen Childs  
Bette Eberly-Hill and John Hill  
John and Margaret Ford  
Leah and Cyrus Frelinghuysen  
Noreen and Michael Friedman  
Wendy Frosh  
Donald Fuhs  
Daniel and Sarah Gallagher  
Estate of Daniela S. Gerhard+  
Denise and Peter Glassman  
Ellen and Michael Gold  
Henry and Carol Goldberg  
Sandra Gollob and Aaron Loewenberg  
Martha Goodman  
Sharon Goozh-Mosches  
Tracy Gray and John Iwaniec  
The Greene-Milstein Family Foundation  
Edward Grossman and Rochelle Stanfield  
Lana Halpern  
Holly Hamilton  
Sara Harris  
Jill Haueter  
Monica Jeffries Hazangeles and John P. Hazangeles  
Janice Hazlehurst and Stephen Charles  
Connie Heller  
Linda Herman  
A. Eileen Horan  
Jane Houlihan  
Jean and Michael Hoyt  
Linda and Van Hubbard  
Bridget and Joseph Judge  
Cheryl and James Jukes  
Ava Kaufman  
Lee Keiser  
Brit Kirwan  
Kathleen Knepper  
Iris Stein Korman and Louis Korman

Delia and Marvin Lang  
James Langley  
Tina and Arthur Lazerow  
Karen Lefkowitz and Al Neyman  
Isiah and Catherine Leggett  
Deborah Marks  
J. Alberto Martinez and Anna Pigotti  
Molly Matthews and Lewis Ferguson  
Ann McDaniel  
Margaret McDowell  
Jamie and Jessica McIntyre  
Mark Milstein  
Mobedjina Trust+  
Shani Moore  
Michelle Musgrove  
Kenneth O'Brien and Yanqiu He  
Bayo and Funke Oyewole  
Eunice Park-Lee and John Lee  
Susan Pederson  
Victoria J. Perkins  
HelenLouise C. Pettis  
Richard and Melba Reichard  
Prudence Rice  
Dale Rosenthal and Michael Cutler  
Suzanne Ryerson  
John Sackett  
Carol Salzman and Michael Mann  
Carolyn and Martin Shargel  
Frederick Shoup  
Christine Shreve and Thomas Bowersox  
Myrna Sislen  
Deborah Smith  
Chris Syllaba/Jordan Kitt's Music  
Grace Tran  
Jim and Carol Trawick Foundation  
Carl and Beryl Tretter  
Marty Wall  
June Wolff  
Michael Wu and Ellen Stanley

## MEMBERSHIP

Anonymous (7)  
Jean Accius  
Michael and Judy Ackerman  
Cresel and Wiley Adams  
Rhoda Alderman  
Mary Kay and Dave Almy  
Richard Alperstein and Lenny Seliger  
Andy Altman  
Lori Anderson

Karolina and J. Tyler Anthony  
Steven Anzalone  
Louise Appell  
Welman, Peilin and Stella Aquino  
Ivy Baer and Marc Rothenberg  
Marilyn Bate  
Bethesda Travel Center LLC  
Cathy Bernard  
Gary and Amy Block  
Leslie and David Bloom  
James and Christina Bradley  
Robby Brewer and Connie Lohse  
Timothy Bright  
Marilyn Brody and Allen Kronstadt  
Doris Brott  
Hope Brown-Saxton and Wayne Saxton  
Kris Brown and Jonathan Coleman  
Sarah Brown and Alan Gourley  
Barbara Brownridge-Walsh and Thomas Walsh  
Mary and Gregory Bruch  
Jeff and Lucie Campbell  
Kathleen and Bill Carey  
John Caricchio  
Trish and Tim Carrico  
Anita Clarke  
Robert Cole  
Jeanette Conrad-Ellis  
Bruce and Carin Cooper  
Kaye Craft  
Christine Daily and Duane Schmidt  
Carol and Joe Danks  
Carolyn Degroot  
Stephen and Maryann Dembek  
Cindy and Jeffrey Dill  
Amy and Louis Eber  
Eddie and Rachel Eitches  
Tomi and Gideon Epstein  
Starr and Fred Ezra  
Roger Feintheil  
Marcia Feuerstein and Ronald Schwarz  
Carolyn and Carl Fichtel  
Fidelity National Title Insurance Company  
Anthony and Wyn Fitzpatrick  
Marlies and Karl+ Flicker  
Jennie Forehand+ and William E. Forehand, Jr.  
Noreen and Michael Friedman  
Yale Friedman  
J. H. Gaddis  
Daniel and Sarah Gallagher

## THANK YOU, DONORS & SUPPORTERS

Pam Gates and Bob Schultz  
 Asha M. George  
 Cherry and Sanford Glazer  
 Ellen and Michael Gold  
 Ted Goldstock and Tami Mark  
 Janet and Barry Gorman  
 Alan Gourley  
 Cheryl and James Grauberger  
 Doris and Mark Greene  
 Jonathan Griffith and Kate Stewart  
 John Grigg and Ann Willis  
 Melanie Grishman  
 Guilford Retirement Services  
 Ellie and John Hagner  
 Gerri Hall and David Nickels  
 Kit and Ken Hall  
 Lana Halpern  
 Julie and John Hamre  
 John C. Hanson  
 Matt Harris  
 Diana and Paul Hatchett  
 Vicki Hawkins-Jones and  
 Michael D. Jones  
 Connie Heller  
 Jay Hellman  
 Birgit Henninger  
 Esther and Gene Herman  
 Daniel and Joanne Higgins  
 Steven and Louisa Hollman  
 A. Eileen Horan  
 Carol and Larry Horn  
 Linda and Van Hubbard  
 Renee Iacona  
 Igersheim Family Foundation  
 Terry Jacobs and Dena Baker

Richard Jaffe  
 Ron Jordan  
 Richard and Therese Jourdenais  
 The Kapiloff Foundation/  
 Lynn Kapiloff  
 Ron Kaplan  
 Jill and Lawrence Katz  
 John and Zorina Keiser  
 Chris and Henri Keller  
 Liam Kimbell and Tammy Moore  
 Brit Kirwan  
 John M. and Teri Hanna Knowles  
 Robert Kopera  
 Stephen Kramer  
 Shyam Krishnan  
 Jen and Sanjay Krishnaswamy  
 Tom Lansford  
 Art and Tina Lazerow  
 Karen Lefkowitz and Al Neyman  
 Darrell Lemke and  
 Maryellen Trautman  
 Ellen and Stuart Lessans  
 Marcel Lettre  
 Sheila Levin  
 Lewis Levine  
 Steven and Alexis Levine  
 William Levitan and Jackie Lewis  
 Shannon Lindsay  
 Jill and James Lipton  
 Diana Locke and Robert Toense  
 Nancy and Dan Longo  
 Janice and Jerome Lucas  
 Francis Luong and  
 Elizabeth Brinson  
 Susan Luse

Danyelle Mannix  
 Molly Matthews and  
 Lewis Ferguson  
 Nancy J. McGinness and  
 Thomas J. Tarabrella  
 Jamie and Jessica McIntyre  
 Simone and Christopher Meyer  
 Meyers, Rodbell & Rosenbaum/  
 Joe Chazen  
 Nell Minow and David Apatoff  
 Kelly Mitchell  
 Jane and Paul+ Molloy  
 Shani Moore  
 Michelle Musgrove  
 Victoria Beall Muth  
 Martha Newman  
 Robert and Florence Nisbet  
 Glenn Nyre  
 Phillip and Janine O'Brien  
 Amanda and Robert Ogren  
 Heidi and David Onkst  
 Scott Oppler and  
 Kellie Leighton-Oppler  
 Bayo and Funke Oyewole  
 Dale and Anthony Pappas  
 Carolyn L. Pasti  
 Gloria Paul  
 Mary Pedigo and Daniel Washburn  
 HelenLouise C. Pettis  
 Cindy and Eliot Pfanstiehl  
 Marsha and Peter Pratt  
 Richard and Melba Reichard  
 Lisa Rispler  
 Marylouise and Harold Roach  
 Patrice Robins  
 Lorraine and Barry Rogstad  
 Shelley and Harry Ross  
 Janet and Michael Rowan  
 Duane Schmidt  
 Jill N. Shaffer  
 James Sheaffer and  
 Dale Koepenick  
 Grace Shen  
 Steven and Donna Shriver  
 Mark and Merrill Shugoll  
 Jim Siegel and Linda Stern-Siegel  
 Barbara Silberman  
 Fran and Richard Silbert  
 Ann Jones Simpson+  
 Jeffrey Slavin  
 Jeb Smith  
 Leon and Deborah Snead  
 Rick Sniffin and  
 Mary Ellen Savarese  
 Diane Sondheimer and  
 Rabbi Peter Novick  
 Robin and Stuart Sorkin  
 Paul Sowter  
 Stephen and Tanya Spano  
 J. James Spinner and  
 Karen Rinta-Spinner  
 Lori Stapleton  
 James Stekert  
 M. Alexander Stiffman+ and  
 Karen Rosenthal  
 David Stroop  
 Judi and Richard Sugarman  
 Wendy and Donald Susswein

Chris Syllaba/Jordan Kitt's Music  
 Marilyn and Mark Tenenbaum  
 Linda and Steuart Thomsen  
 Myra Turoff and Ken Weiner  
 Julio Valencia  
 Heather VanKeuren  
 Johanna H. Weekley  
 Meredith Weiser and  
 Michael Rosenbaum  
 Susan Wellman  
 Steven and Irene White  
 Patsy and Cortez White  
 Karen Wilson  
 Benjamin Wu and Teresa Lee  
 Susan and Jack Yanovski  
 Paul A. and Peggy L. Young  
 Mark Zaid  
 Pan Zheng and Yang Liu  
 David Ziegele

### IN-KIND

Jennifer Barlow  
 Jeff Breslow  
 Amy Eber  
 Lyle and Cecilia Jaeger  
 Ted Goldstock, Lerch, Early &  
 Brewer, Chartered  
 Old Line Audio  
 Rockley Family Foundation/  
 Jordan Kitt's Music  
 Seasons 52  
 Wegmans

### IN MEMORIAM

*Gifts were made in the memory of  
 the following individuals.*  
 Ruth Albricht  
 Arthur Cantor  
 Kyung Nam Choi Halmuni and  
 John C. Yoon  
 Alla Kanareykina  
 Livia Laffey

### CON BRIO SOCIETY

*The Con Brio Society honors  
 supporters who make planned gifts,  
 both large and small, to Strathmore  
 through a bequest or other estate  
 plan provision. Their thoughtful  
 dedication provides a dependable  
 foundation of funding to ensure the  
 future of the arts and arts education  
 programs.*  
 Anonymous (5)  
 Louise Appell  
 Harriet and Jerome Breslow  
 Jeff and Amie Breslow  
 Sharon P. Brown  
 John Cahill  
 Kathleen and Bill Carey  
 Eleanor and Oscar Caroglanian  
 Jonita and Richard S. Carter  
 Irene S. Cooperman  
 Trudie Cushing and Neil Beskin  
 Steven Michael D'Alessio and  
 Madeline Krupenie D'Alessio  
 Doris and Mark Greene  
 Julie and John Hamre

# THE ARTS ARE ESSENTIAL.

Give now to ensure we can  
 continue to create engaging  
 arts opportunities across our  
 stages, in our galleries, and  
 throughout the community.

Whether you join us as a  
 member or support impactful  
 education programs through  
 Bloom, your gift builds a  
 creative community where the  
**arts belong to everyone** and  
 where artists can explore their  
 full potential.

Make a difference today.

*Thank you!*



OPEN CAMERA  
 SCAN CODE  
 GIVE NOW





Yanqiu He and Kenneth O'Brien  
Connie Heller  
A. Eileen Horan  
Vivian and Peter Hsueh  
Nicholas Krewson  
David R. and Deborah S. Lambert  
Richard Lampl  
Tina and Arthur Lazerow  
Chiu and Melody Lin  
Diana Locke and Robert Toense  
Janet L. Mahaney  
Jeff Menick  
Carol and Alan Mowbray  
Cindy and Eliot Pfanstiehl

Lorraine and Barry Rogstad  
Barbara and David+ Ronis  
Jill Rothman  
Phyl and Ken+ Schwartz  
Jill N. Shaffer  
Stephen and Tanya Spano  
Annie S. Totah  
Maryellen Trautman and  
Darrell Lemke  
Carol Trawick  
Peter Vance Treibley  
Myra Turoff and Ken Weiner  
Marty Wall

#### ESTATE GIFTS

Estate of Joseph and Judy Antonucci  
Estate of Barbara Burtoff  
Estate of Muriel Fine  
Estate of Daniela S. Gerhard  
Estate of Daraius and  
Banoo Mobedjina  
Estate of Henry J. Schalizki and  
Robert D. Davis  
Estate of Deane and John Sherman  
Estate of Bernard Wills

*Strathmore can share gift planning ideas that benefits you, while providing a lasting legacy for the arts. For more information, please contact Erin Phillips, Director of Donor Engagement, at 301.581.5160 or ephillips@strathmore.org.*

*Please note that "+" denotes that a donor is being honored posthumously.*

Strathmore is grateful to our generous donors and has made every effort to ensure accuracy in our recognition. Should any contributions recognized above conflict with your personal records, please let us know by contacting donors@strathmore.org or 301.581.5145.

**Strathmore is a 501(c)(3) nonprofit organization.**

## GENERAL INFORMATION

### DIRECTIONS & METRO

Strathmore is located on Rockville Pike (Route 355), half a mile north of the Capital Beltway (I-495).

**M** Take Metro to Strathmore! Strathmore is adjacent to the Grosvenor-Strathmore station on Metro's Red line.

Strathmore Music Center is accessible by bus on routes 46, 6, 37, 96, 101.

For complete driving directions and Metro, bus, and parking information, visit [strathmore.org/visit](http://strathmore.org/visit).

### PARKING

**Music Center performances:** For ticketed performances, complimentary parking is available in the Grosvenor-Strathmore Metro garage. Entrance located off Tuckerman Lane.

**For nonperformance Music Center events, including all Education Center events:** Metered parking is available on Tuckerman Lane, or park in the Metro garage where a SmarTrip or credit card payment of \$5.20 is required Monday through Friday. Parking is free on weekends.

**For Mansion concerts, exhibitions, and events:** Limited free parking is available on a space-available basis in the Mansion lot. Enter at 10701 Rockville Pike.

### ACCESSIBILITY

Strathmore is committed to making our programs accessible for our patrons with disabilities. To request assistance, please visit [strathmore.org/access](http://strathmore.org/access) or call us at 301.581.5100

### HOURS OF OPERATION

#### TICKET OFFICE HOURS

Located in the Music Center  
5301 Tuckerman Lane, North Bethesda, MD 20852  
301.581.5100  
Mon–Fri, 10am–5pm  
The Music Center ticket office is also open 3 hours prior to performances through intermission.

#### SCHEDULED WINTER CLOSINGS:

Sun, Dec 24–Mon, Jan 1: Strathmore Administrative Offices and The Mansion at Strathmore will be closed.  
Mon, Dec 25: Ticket office closed.  
Mon, Jan 15: Strathmore Administrative Offices and are closed in observance of Martin Luther King, Jr. Day.  
Mon, Feb 19: Strathmore Administrative Offices are closed in observance of President's Day

#### MANSION SHOP & GALLERIES

10701 Rockville Pike, North Bethesda, MD 20852  
Tue–Fri, 12-4pm; Sat, 10am–3pm; Sun–Mon, Closed

#### ALLEGRO KITCHEN MUSIC CENTER CAFÉ

Opens 90 minutes prior to Concert Hall performances.

### STAY CONNECTED

   @StrathmoreArts

### JOIN & GIVE

To learn more about donating, or to become a member, visit [strathmore.org/give](http://strathmore.org/give) or call us at 301.581.5145

## OUR MISSION

We amplify distinctive and diverse artistic voices and curate experiences to enrich *every* life and shape stronger communities.

# STRATHMORE NEWS

Strathmore Hall Foundation, Inc.  
5301 Tuckerman Lane  
North Bethesda, MD 20852-3385

NON-PROFIT ORG.  
U.S. POSTAGE  
**PAID**  
PERMIT NO. 1763  
SUBURBAN, MD

Strathmore is partially funded by  
operating grants from:



Customer Number

Source Code



# MAKE HOLIDAY MEMORIES

Celebrate the season with Dave Koz, Mannheim Steamroller, and audience favorite *The Hip Hop Nutcracker*.

We also have plenty of unique gift options at the Shop at Strathmore, and of course Strathmore gift certificates are always in style.

**STRATHMORE.ORG**

Dave Koz, Mannheim Steamroller by Matt Christine  
Photography, *The Hip Hop Nutcracker* by Cheryl Mann

